

Scarves are one of my favorite gifts to make; mainly because they can be a great opportunity to learn a new stitch pattern. This pattern is quickly learned and equally quickly crocheted from its lacy fabric. Make one in bamboo for the summer or cashmere for the winter, either way your gift will be greatly appreciated.



Special Stitches:

V-ST [dc, ch 1, dc] in stitch indicated
TREFOIL [ch 3, (sc, ch 4) 3 times, sc, ch 3] in stitch indicated

Crochet Symbol Key:

○ ch
 • sl st
 + sc
 ⊥ dc

Trefoil Scarf

By Robyn Chachula

Materials

Yarn:

Sublime Cashmere Merino Silk DK (CYCA #4), 75% extra fine merino, 20% silk, 5% cashmere, 116m (127 yds) / 50g:
 059 Beetroot 3 balls

Hook:

H/8 (5.0mm) hk or hk needed to obtain gauge

Notions:

Tapestry needle for weaving in ends
 Spray bottle and blocking pins
 6mm (1/4") wide by 4 m (13 ft) ribbon in contrasting color

Stitches Used:

ch Chain
 sl st Slip Stitch
 sc Single Crochet
 dc Double Crochet
 sk skip
 t-ch turning chain

Finished size:

Scarf is 6" wide by 61" tall (15cm by 155cm).

Gauge:

2 Trefoils by 7 rows = 13 cm (5") wide by 10 cm (4") long

crochet by faye

Copyright © 2013 crochet by faye All rights reserved

Directions:

MAIN BODY

Ch 25,

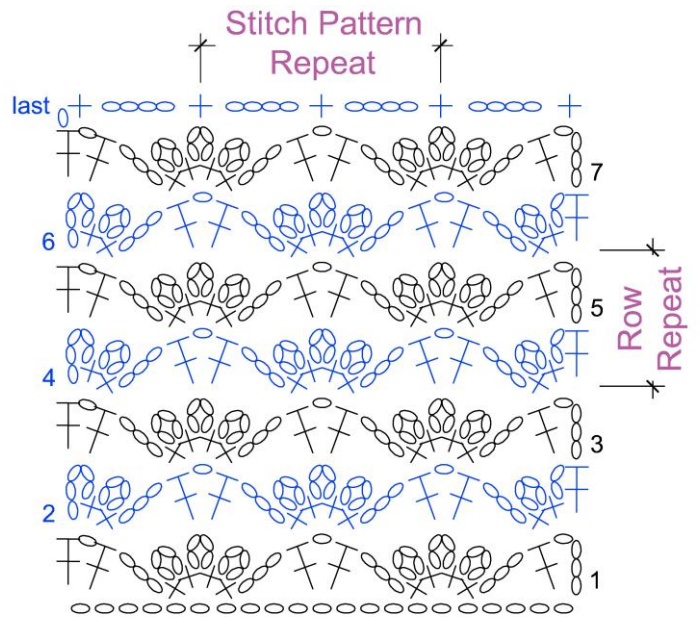
Row 1 Dc in 5th ch from hook, *sk 4 ch, trefoil in next ch, sk 4 ch, v-st in next ch, rep from * once, turn. (2 v-sts)

Row 2 Ch 5 (counts as dc, ch-2 sp), [sc, ch 4, sc, ch 3] in ch-1 sp, sk next ch-4 sp, v-st n next ch-4 sp, trefoil in next ch-1 sp, sk next ch-4 sp, v-st in next ch-4 sp, ch 3, [sc, ch 4, sc, ch 2, dc] in 4th ch of t-ch, turn.

Row 3 Ch 4 (counts as dc, ch-1 sp), dc in ch-2 sp, trefoil in next ch-1 sp, sk next ch-4 sp, v-st in next ch-4 sp, trefoil in next ch-1 sp, sk next ch-4 sp, v-st in last ch-5 sp, turn.

Rep Rows 2-3 51 times.

Last Row Ch 1, sc in dc, *ch 4, sk next ch-4 sp, sc in next ch-4 sp, ch 4, sc in ch-1 sp, rep from * once, do not turn.



Trefoil Lattice Stitch Pattern

EDGING

Rnd 1 Sc 210 times down long edge of scarf body,

3 sc in first ch of foundation ch, turn work 90 degrees, sc 21 times across foundation ch, 3 sc in last ch of foundation ch, turn work 90 degrees, sc 210 times up edge of scarf, 3 sc in last sc, turn work 90 degrees, sc 21 times across last row, 3 sc in last row, sl st to first sc, do not turn.

Rnd 2 Sl st in next sc, ch 5 (counts as dc, ch-2 sp), *sk 2 sc, dc in next sc, ch 2, rep from * across to corner, [dc, ch 5, dc, ch 2] in corner sc, turn 90 degrees, rep from * around, sl st to 3rd ch of t-ch, do not turn.

Rnd 3 Ch 1, 3 sc in ea ch-2 sp, 7 sc in ea ch-5 sp, around, fasten off, weave in ends.

Finishing:

Pin scarf to schematic size. Spray with water and allow to dry. Weave ribbon through Rnd 2 of edging around. Tie a bow with ends of ribbon.

